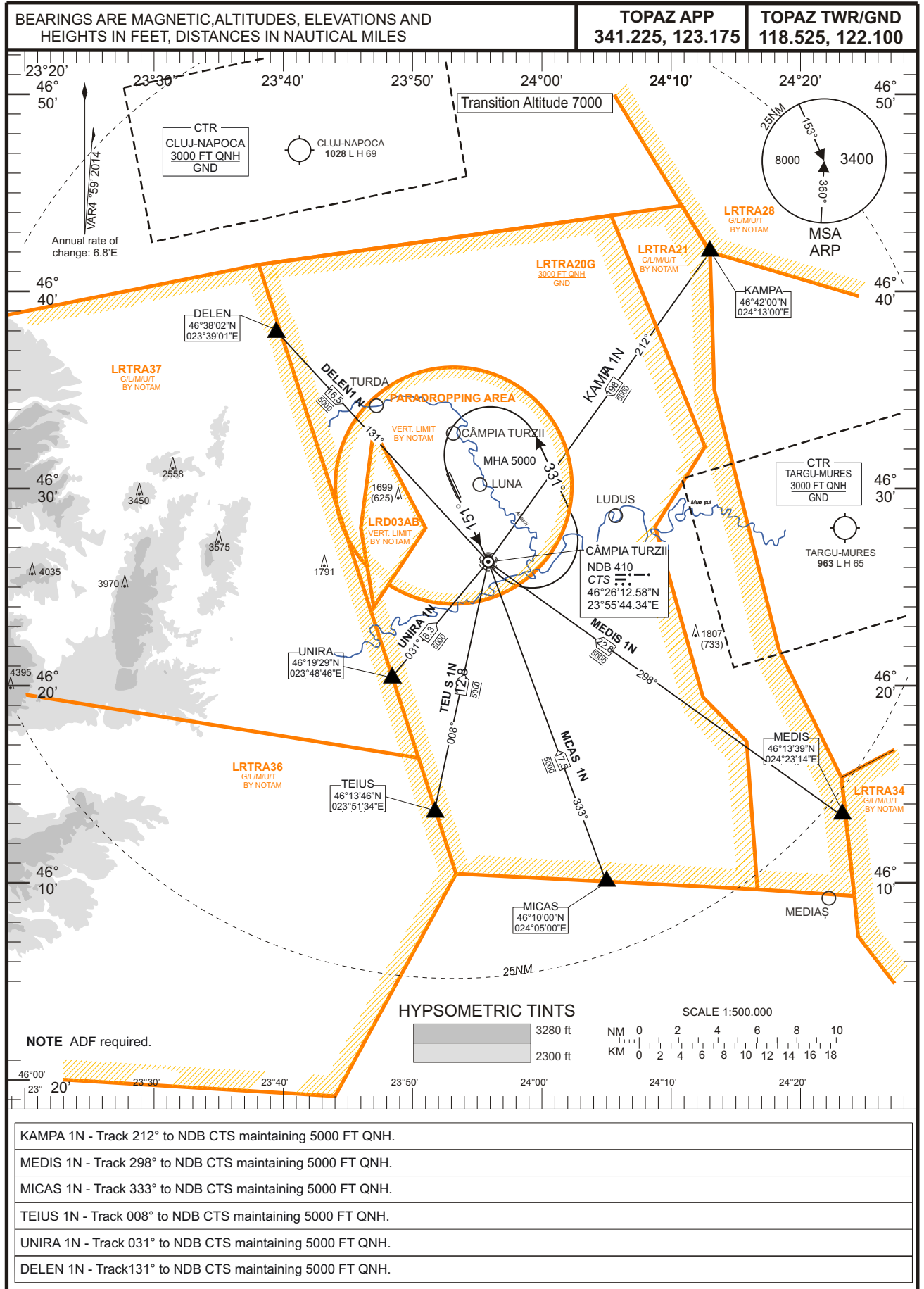


**STANDARD ARRIVAL
CHART - INSTRUMENT**

**CÂMPIA TURZII (LRCT)
RWY 33**

KAMPA 1N, MEDIS 1N, MICAS 1N, TEIUS 1N, UNIRA 1N, DELEN 1N



COORDINATES		
NDB CTS	46°26'12.58"N	23°55'44.34"E
DELEN	463802N	0233901E
KAMPA	464200N	0241300E
MEDIS	461339N	0242314E
MICAS	461000N	0240500E
TEIUS	461346N	0235134E
UNIRA	461929N	0234846E

RADIO COMMUNICATION FAILURE

Set transponder 7600. Maintain last cleared heading and altitude for 1 minute. Start descending to 5000 FT QNH inbound MCTR entry point. Proceed inbound NDB CTS and follow instrument approach procedure ILS RWY33 or NDB RWY33. If necessary to change RWY, go around, follow instrument approach procedure ILS RWY33 or NDB RWY33, then circling to RWY15.

Descending shall be executed in accordance with vertical restrictions specified in charts.